

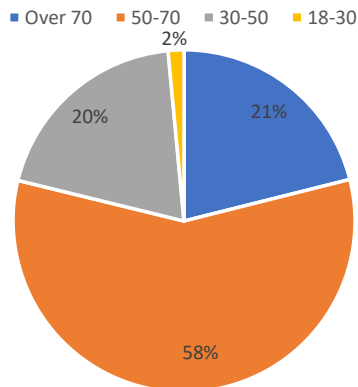


Southdean Place
Plan – 2022
A view from the
community

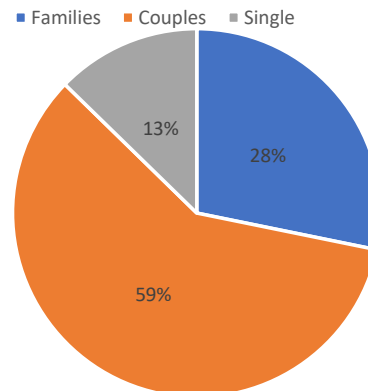
Results of Community Survey - Demographics

- The Survey was conducted in August and September 2022, closing on the September 10th.
- The Survey was opened to both Residents of Southdean and those from other communities who use Southdean's facilities.
- There were 71 responders to this Survey, **the first of its kind for Southdean**

Age range of survey responses



Types of Household Responses

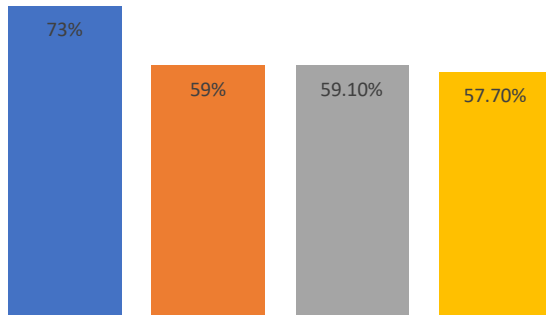


- It is clear that with nearly 80% of the responses from over 50's the issues raised are reflective of the reach of the initial survey.
- Rather than canvas for younger participants mid survey, this is something that will be a focus for future surveys.

Results from the Survey

Southdean areas listed as highest rated issues

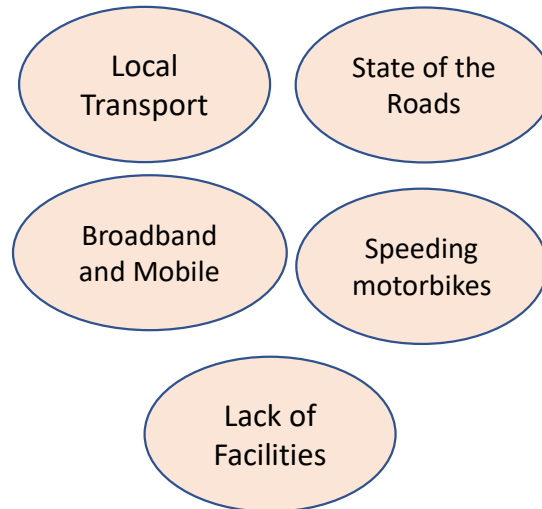
■ Setting and Landscape ■ Broadband ■ Roads ■ Community Facilities



Best things about Southdean



Worst things about Southdean



Southdean Place Plan

Enhance and Protect the Best

The Southdean Place Plan has been drawn up to reflect the direction that Community Members and those external to the Community have expressed in the Survey, and issues that have arisen within community meetings.

Setting and Landscape

- A leading issue raised in the survey and community meetings is the preservation of the unspoilt setting of Southdean and the outlook from Chesters.
- The setting has importance not only for residents of Southdean, but also visitors, whether they be local or further afield.
- As we will see Southdean lacks a number of attributes, but the Scenery and landscape helps to attract visitors for the local Tourist Providers, an important component on the local community.
- A Scottish Borders National Park is a proposal currently under early consideration, and Southdean Community is within the potential area outlined for the Park as outlined in the Feasibility Study.

Community Spirit

- The Community Spirit is strong but Facilities need to be enhanced for all generations.
- The Community needs to see broadened Community services for older residents and introduce more for families.

Southdean Place Plan

Address the Issues Raised

Communications

- Communications have been a major concern for the Community and continues to be so whilst elements of the community are as yet unable to benefit from enhanced communication – both broadband and mobile.

Infrastructure

- The quality of road infrastructure has been raised as a concern in the Survey and has been a longstanding issues
- Roads and Verges damage , Potholes , Ditch and Drain Clearance are all regularly raised.
- The heavy vehicle traffic on the local roads, notably Timber Traffic, has put added strain on the local infrastructure.
- The frequent damage to road quality and verges, with sharp edges as heavy vehicles come off the roads , risk damage to local vehicles.
- Grid reinforcement, this is regularly tested in storms resulting in interruptions. There is a lack of capacity within the network to allow alternative energy technologies to be adopted at scale

Lack of Community Facilities for all ages

- A number of survey comments cited the lack of shops and also entertainment. The Community priority is to enhance what we already have in Southdean Village Hall, make more of redundant space and provide a variety of accessible space for all ages and types of groups.

Priorities arising from the Place Plan

Enhance and Protect the Best

Communications:

Continue to push for full coverage for broadband and mobile connectivity

Family Facilities:

Possible playpark, improved indoor space.

Setting and Landscape:

Walks —enhancing outdoor opportunities for the community.

Community safety:

Seek enhanced speed control measures

Community Spirit:

Local public transport improvement

Setting and Landscape:

Working with local landowners

Infrastructure:

Try and improve drains, potholes and road verges.

Community Facilities:

Enhance village hall as 'Social hub'.

Sustainability and

Resilliance:

Net zero transition

Address the Issues Raised